

MONTHLY MEMBERSHIP PROGRESS REPORT

LOCATION REP OF SRI LANKA

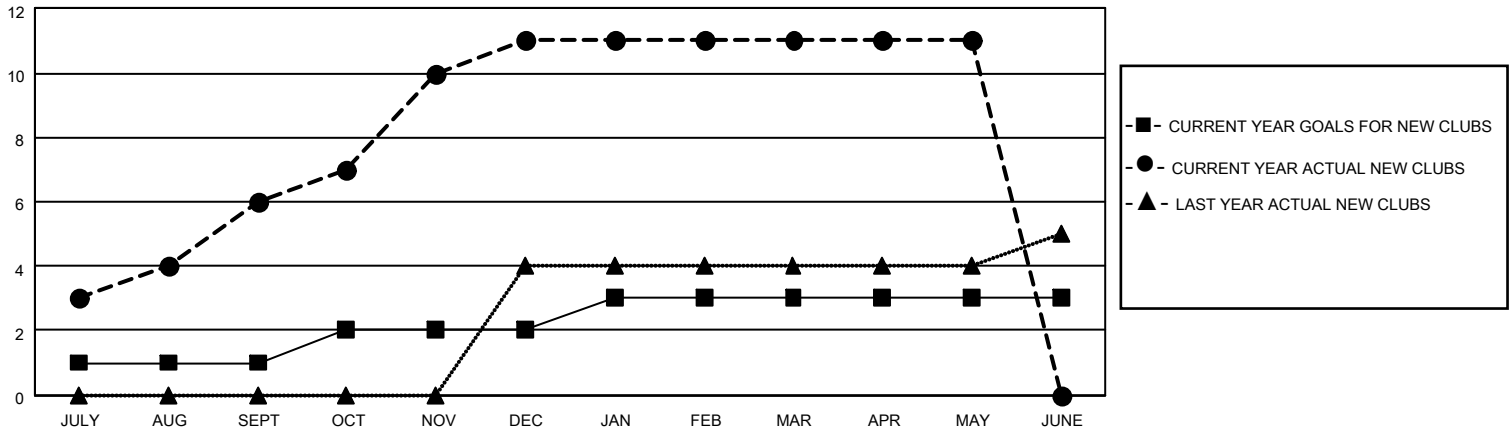
District 306 C2

Results as of: 5/31/2022

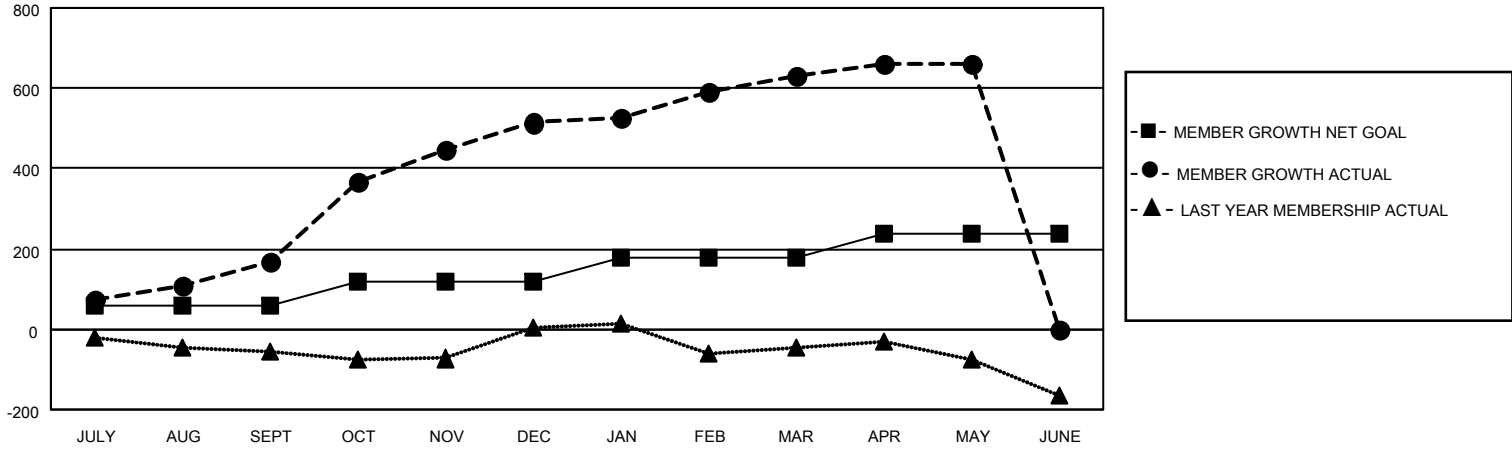
Clubs			
RESULTS FOR 2021-2022			
QUARTER	NEW CLUB GOAL	NEW CLUBS	DROPPED CLUBS
JULY/AUG/SEPT	1	6	0
OCT/NOV/DEC	1	5	0
JAN/FEB/MAR	1	0	0
APR/MAY/JUNE	0	0	0

Members			
RESULTS FOR 2021-2022			
QUARTER	MEMBER GROWTH NET GOAL	MEMBER GROWTH ACTUAL	DROPPED MEMBERS ACTUAL (including transfers)
JULY/AUG/SEPT	60	216	43
OCT/NOV/DEC	60	394	42
JAN/FEB/MAR	60	157	27
APR/MAY/JUNE	60	67	36

GOALS AND ACTUAL NEW CLUBS CUMULATIVE



GOALS AND ACTUAL MEMBERS CUMULATIVE



DROPPED CLUBS: 0

79 CLUBS OF 101 ADDED 1 OR MORE NEW MEMBERS

GENDER DISTRIBUTION

MALE	2,111 (75.15%)
FEMALE	697 (24.81%)
NON BINARY	0 (0.00%)
PREFER NOT TO ANSWER	1 (0.04%)

DROPPED MEMBERS

[CLICK HERE FOR CUMULATIVE MEMBERSHIP DATA](#)

DECEASED	15
CLUB CANCELLED	0
OTHER	134
TOTAL	149

TOTAL FAMILY UNIT MEMBERS 1,078

FAMILY MEMBERS PAYING HALF DUES 617